

SUSPENSION KITS



Arctic Cat

Eng	Year	Model No	Lower A-Arm Kit	Upper A-Arm Kit	Rear Independent Suspension Kit	Swing Arm Bearing Kit	Front shock bushing kit	Rear shock bushing kit
250	1999 - 05	250 2x4	550.1039	550.1039	550.1066		521.0001	521.0001
250	2006 - 09	250 2x4	550.1073	550.1073		528.1056		521.0001
250	2001 - 02	250 4x4	550.1039	550.1039	550.1066		521.0001	521.0001
250	2003 - 05	250 4x4	550.1039	550.1039	550.1066		521.0001	521.0001
250	2006 - 08	DVX250	550.1073	550.1073				
300	1998 - 04	300 2x4	550.1039	550.1039	550.1066		521.0001	521.0001
300	2010 - 12	300 2x4	550.1073	550.1073		528.1056		
300	1998 - 05	300 4x4	550.1039	550.1039	550.1066		521.0001	521.0001
300	2009 - 12	DVX300	550.1073	550.1073				
375	2002	375 2x4 w/AT	550.1039	550.1061			521.0001	521.0001
400	1998 - 01	400 2x4	550.1039	550.1039			521.0001	521.0001
400	2003	400 2x4 FIS w/AT - w/MT	550.1039	550.1061	550.1065		521.0001	521.0001
400	2004	400 2x4 FIS w/AT	550.1060	550.1061	550.1064		521.0001	521.0001
400	2004	400 2x4 FIS w/MT	550.1060	550.1061			521.0001	521.0001
400	1998 - 00	400 4x4	550.1039	550.1039			521.0001	521.0001
400	2003 - 04	400 4x4 w/AT	550.1039	550.1061			521.0001	521.0001
400	2001	400 4x4 w/MT	550.1039	550.1039			521.0001	521.0001
400	2002 - 04	400 4x4 w/MT	550.1039	550.1061			521.0001	521.0001
400	2009 - 13	400 FIS 4x4 TRV	550.1060	550.1061	550.1064			
400	2003	400 FIS 4x4 w/AT	550.1039	550.1061	550.1065		521.0001	521.0001
400	2004 - 06	400 FIS 4x4 w/AT	550.1060	550.1061	550.1064		521.0001	521.0001
400	2007 - 08	400 FIS 4x4 w/AT	550.1060	550.1061	550.1064			
400	2002 - 03	400 FIS 4x4 w/MT	550.1039	550.1061	550.1065		521.0001	521.0001
400	2004 - 06	400 FIS 4x4 w/MT	550.1060	550.1061	550.1064		521.0001	521.0001
400	2007 - 08	400 FIS 4x4 w/MT	550.1060	550.1061	550.1064			
400	2004	400 TBX 4x4	550.1039	550.1061	550.1065		521.0001	521.0001
400	2005 - 06	400 TBX 4x4	550.1060	550.1061	550.1064		521.0001	521.0001
400	2007	400 TRV	550.1060	550.1061				
400	2006	400 VP 4x4	550.1039	550.1061			521.0001	521.0001
450	2011 - 12	450 H1	550.1060	550.1061	550.1064			
454	1996 - 98	454 2x4 / 4x4	550.1039	550.1039			521.0001	521.0001
500	1998 - 01	500 4x4 w/MT - w/AT	550.1039	550.1039			521.0001	521.0001
500	2002	500 4x4 w/AT - FIS TBX	550.1039	550.1061			521.0001	521.0001
500	2002 - 03	500 FIS 4x4 w/AT	550.1039	550.1061	550.1065		521.0001	521.0001
500	2004 - 06	500 FIS 4x4 w/AT - w/MT	550.1060	550.1061	550.1064		521.0001	521.0001
500	2007 - 00	500 FIS 4x4 w/AT - w/MT	550.1060	550.1061	550.1064			
500	2002	500 FIS 4x4 w/MT	550.1039	550.1061	550.1065		521.0001	521.0001
500	2003 - 08	500 FIS TBX / TRV 4x4	550.1039	550.1061	550.1065		521.0001	521.0001
500	2013	500 EFI/TRV/XT	550.1060	550.1061	550.1064			
550	2009 - 13	550 H1 FIS / GT / TRV 4X4	550.1060	550.1061	550.1064			
550	2009 - 13	550 Prowler XT & EFI	550.1060	550.1061	550.1064			
650	2006 - 09	650 Prowler XT	550.1060	550.1061	550.1064			
650	2004 - 13	650 4x4 w/AT V2	550.1060	550.1061	550.1064		521.0001	521.0001

SUSPENSION KITS



Arctic Cat Cont.

Eng	Year	Model No	Lower A-Arm Kit	Upper A-Arm Kit	Rear Independent Suspension Kit	Swing Arm Bearing Kit	Front shock bushing kit	Rear shock bushing kit
700	2008 - 13	700 Diesel / EFI / GT / H1 TRV / GT	550.1060	550.1061	550.1064			
700	2008 - 13	700 Prowler XTX Et EFI	550.1060	550.1061	550.1064			
700	2012	HDX	550.1060	550.1061				
1000	2010 - 11	H2 MUDPRO	550.1060	550.1061	550.1064			
1000	2008 - 11	H2 THUNDERCAT	550.1060	550.1061	550.1064			
1000	2011 - 13	1000 Prowler H2 XTZ Et EFI	550.1060	550.1061	550.1064			
1000	2009 - 10	Prowler H2 1000 XTZ	550.1060	550.1061				

Can Am

Eng	Year	Model No	Lower A-Arm Kit	Upper A-Arm Kit	Rear Independent Suspension Kit	Swing Arm Bearing Kit	Front shock bushing kit	Rear shock bushing kit
330	2004 - 05	Outlander 330	550.1062		550.1069			
400	2003 - 12	Outlander 400	550.1062		550.1069			
400	2013 - 14	Outlander 400			550.1069			
450	2008 - 14	DS450 STD/X	550.1062	550.1062				
500	2007 - 12	Outlander 500	550.1062		550.1069			
500	2013 - 14	Outlander 500	550.1062	550.1062	550.1080			
500	2002 - 03	Quest 500	550.1062	550.1062		528.1155		
500	2018 - 12	Renegade 500	550.1062	550.1062	550.1069			
500	2013 - 14	Renegade 500	550.1062	550.1062	550.1080			
500	1999 - 00	Traxter 500				528.1155		
500	2001 - 05	Traxter 500	550.1062	550.1062		528.1155		
650	2007 - 12	Outlander 650	550.1062	550.1062	550.1069			
650	2013 - 14	Outlander 650	550.1062	550.1062	550.1080			
650	2002 - 04	Quest 650	550.1062	550.1062		528.1155		
650	2004 - 05	Traxter 650	550.1062	550.1062		528.1155		
800	2006 - 11	Outlander 800	550.1062	550.1062	550.1069			
800	2013 - 14	Outlander 800	550.1062	550.1062	550.1080			
800	2012	Outlander STD XT 800R	550.1062	550.1062	550.1080			
800	2007 - 11	Renegade 800	550.1062	550.1062	550.1069			
800	2012 - 14	Renegade 800	550.1062	550.1062	550.1080			
800	2011 - 13	Commander 800	550.1062		550.1079			
1000	2011 - 13	Commander 1000	550.1062		550.1079			
1000	2013 - 14	Outlander 1000	550.1062	550.1062	550.1080			
1000	2012 - 14	Outlander STD XT 1000	550.1062	550.1062	550.1080			
1000	2012 - 14	Renegade 1000	550.1062	550.1062	550.1080			

Honda

Eng	Year	Model No	Lower A-Arm Kit	Upper A-Arm Kit	Rear Independent Suspension Kit	Swing Arm Bearing Kit	Front shock bushing kit	Rear shock bushing kit
90	1993 - 13	TRX90	550.1038			528.1009		
250	1985 - 87	ATC250ES / SX				528.1056		
250	1985 - 87	TRX250 Fourtrax				528.1056	521.1008	529.5052
250	1997 - 13	TRX250 Recon	100.0010	100.0010		528.1056	521.1008	

SUSPENSION KITS



Honda Cont.

Eng	Year	Model No	Lower A-Arm Kit	Upper A-Arm Kit	Rear Independent Suspension Kit	Swing Arm Bearing Kit	Front shock bushing kit	Rear shock bushing kit
250	2001 - 12	TRX250EX Sportrax	100.0010	100.0010		528.1056	521.1008	
300	1988 - 92	TRX300 Fourtrax 300	100.0010			528.1056		
300	1993 - 00	TRX300 Fourtrax 300	100.0010	100.0010		528.1056		
300	1988 - 00	TRX300FW Fourtrax 4x4	100.0010	100.0010		528.1056		
350	2002	TRX350FE / TM Fourtrax Rancher	100.0010	100.0010		528.1056	521.0008	529.5052
350	2006	TRX350 FE/FM	100.0010	100.0010		528.1056	521.1008	521.1011
350	2000 - 01	TRX350FM / TE Fourtrax Rancher	100.0010	100.0010		528.1056	521.1008	
400	2004 - 07	TRX400FA	100.0010	100.0010		528.1056	521.1008	
400	1995 - 03	TRX400FW Fourtrax Foreman 4X4	100.0010	100.0010		528.1056		
420	2009 - 14	TRX420 FA	100.0010	100.0010	550.1068		521.1009	
420	2007 - 13	TRX420 FE/FM/TE/TM	100.0010	100.0010		528.1203	521.1009	521.1010
420	2014	TRX420FE/FM/TE/TM	100.0010	100.0010		528.1211		
450	1998 - 04	TRX450ES / S / FM / FE	100.0010	100.0010		528.1056	521.0007	
500	2001	TRX500FA	100.0010	550.1003		528.1056	529.5053	529.5053
500	2007 - 14	TRX500FA	100.0010	550.1003		528.1056	521.1008	521.1008
500	2005 - 06	TRX500FE / FM	100.0010	550.1003		528.1056	529.5053	529.5053
500	2007	TRX500FE	100.0010	550.1003		528.1056	529.1008	529.5053
500	2008 - 11	TRX500FE / FPE	100.0010	550.1003		528.1056	521.1008	521.1008
500	2012 - 13	TRX500FE / FM / FPE/M	100.0010	550.1003		528.1203	521.1008	521.1011
500	2014	TRX500FE/FM				528.1211		
500	2007 - 11	TRX500FM	100.0010	550.1003		528.1056	521.1008	521.1008
500	2009 - 14	TRX500FPA	100.0010	550.1003		528.1056	521.1008	521.1008
500	2008 - 11	TRX500FPM	100.0010	550.1003		528.1056	521.1008	521.1008
500	2005 - 06	TRX500TM	100.0010	550.1003		528.1056	529.5053	529.5053
650	2003 - 13	TRX650 / 680 Rincon	100.0010	550.1033	550.1035		529.5053	
700	2008 - 09	TRX700XX	550.1020	550.1020				529.5019

Lower Shock Bush Upgrade Kit Part No.

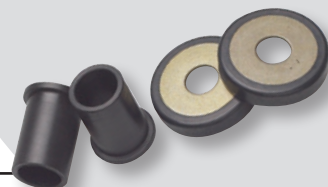
350	00-06	TRX350FE/TM					100.0020	
450	98-04	TRX450S/FM					100.0025	
500	09-12	TRX500FM/FA					100.0030	

Stainless Steel Upgrade Bush for 550.1003

		TRX420 / 500 (Centre tube bush only)		100.0035				
--	--	--	--	----------	--	--	--	--



SUSPENSION KITS



Kawasaki

Eng	Year	Model No	Lower A-Arm Kit	Upper A-Arm Kit	Rear Independent Suspension Kit	Swing Arm Bearing Kit	Front shock bushing kit	Rear shock bushing kit
300	1986 - 87	KLF300A Bayou		550.1010				
300	1988 - 04	KLF300B Bayou	550.1040	550.1040				
300	1989 - 04	KLF300C Bayou 4X4	550.1040	550.1040				
300	1999 - 02	KVF300A / B Prairie 4x4	550.1040			528.1059	521-0006	
360	2003 - 13	KVF360A / B / C Prairie 4x4	550.1040			528.1059	521-0006	521-0005
400	1993 - 99	KLF400 Bayou	550.1040	550.1040				
400	1997 - 02	KVF400A / B / C Prairie 4x4	550.1040			528.1059		
450	2008 - 14	KFX450R	550.1067	550.1029				
620	1994 - 13	KAF 620 Mule 2500/2510/2520/3010/4010	550.1040					
650	2005 - 13	KVF650 Brute force	550.1031			528.1059		
650	2006 - 13	KVF650 I Brute force	550.1029	550.1032	550.1043			
650	2002 - 03	KVF650 Prairie	550.1031			528.1059	521.0006	
700	2004 - 09	KFX 700 V-Force	550.1029	550.1029		528.1059	521.0006	521.0005
700	2004 - 06	KVF700 Prairie	550.1031			528.1059		
750	2005 - 11	KVF750 Brute Force	550.1029	550.1032	550.1043			
750	2012 - 14	KVF750 Brute Force	550.1089	550.1088	550.1043			
950	2000 - 13	KAF950 Mule Diesel 2510/3010/4010	550.1040					

Polaris

Eng	Year	Model No	Lower A-Arm Kit	Upper A-Arm Kit	Rear Independent Suspension Kit	Swing Arm Bearing Kit	Front shock bushing kit	Rear shock bushing kit
200	2005 - 13	Phoenix 200				528.1056		
200	2007	Sawtooth 200				528.1056		
250	1990 - 06	Trail Blazer 250	550.1048					
250	1988 - 92	Trail Boss 250	550.1049					
250	1993 - 99	Trail Boss 250	550.1048					
250	1987 - 92	Trail Boss 250 4x4	550.1049					
250	1993	Trail Boss 250 4x4	550.1048					
250	2000 - 02	Xplorer 250 4X4	550.1048					
300	1994 - 95	300 2x4 / 4x4	550.1048					
300	2006 - 11	Hawkeye 2x4 / 4x4	550.1049		550.1057			
300	2008 - 10	Sportsman 300 4X4	550.1049		550.1057			
300	1995	Trail Boss 300 4X4	550.1048					
300	1996 - 99	Xplorer 300 4x4	550.1048					
300	1996 - 99	Xpress 300	550.1048					
325	2000 - 02	Magnum 325 2x4/4x4/HDS	550.1048					
325	2000 - 02	Trail Boss 325	550.1048					
325	2000 - 02	Xpedition 325	550.1048					
330	2004 - 05	ATP 330 4X4	550.1049					
330	2003 - 05	Magnum 330 2x4 / 4x4	550.1049					
330	2008 - 13	Trail Blazer 330	550.1049					
330	2003 - 13	Trail Boss 330	550.1049					
335	1999 - 00	Sportsman 335	550.1048		550.1054			
335	1999	Worker 335	550.1048		550.1054			

SUSPENSION KITS



Polaris Cont.

Eng	Year	Model No	Lower A-Arm Kit	Upper A-Arm Kit	Rear Independent Suspension Kit	Swing Arm Bearing Kit	Front shock bushing kit	Rear shock bushing kit
380	2000	Scrambler 380 2x4	550.1048					
400	1995 - 02	Scrambler 400 2x4	550.1048					
400	1994 - 99	Sport 400	550.1048					
400	1994 - 97	Sportsman 400 4x4	550.1048					521.5000
400	2001 - 02	Sportsman 400 4x4	550.1048		550.1054			521.5000
400	2003 - 05	Sportsman 400 4x4	550.1049		550.1046			521.5000
400	2008 - 10	Sportsman 400 HO 4x4	550.1049		550.1057			521.5000
400	2011 - 14	Sportsman 400 HO 4x4	550.1049		550.1046			521.5000
400	2003	Trail Blazer 400	550.1049					
400	1995 - 02	Xplorer 400L 4x4	550.1048					
425	1995 - 98	Magnum 425 2x4	550.1048					
425	2000 - 02	Xpedition 425	550.1048					
450	2006 - 07	Sportsman 450	550.1049		550.1046			521.5000
455	1999 - 01	Diesel 455 4x4	550.1048					
500	2004 - 05	ATP 500 4X4	550.1049					
500	1999 - 03	Magnum 500 4x4	550.1048					
500	1997 - 02	Scrambler 500 2x4	550.1048					
500	2003	Scrambler 500 4x4	550.1049					
500	2004 - 07	Scrambler 500 4x4	550.1049					
500	2008 - 09	Scrambler 500 4x4	550.1049					
500	2010 - 12	Scrambler 500 4x4	550.1049					
500	1996 - 99	Sportsman 500 4x4	550.1048		550.1054			521.5000
500	2000	Sportsman 500 4x4	550.1048		550.1054			521.5000
500	2001	Sportsman 500 4x4 DUSE	550.1048		550.1054			521.5000
500	2002	Sportsman 500 4x4 DUSE	550.1048		550.1054			521.5000
500	2001 - 02	Sportsman 500 4x4 HO	550.1048		550.1046			521.5000
500	2003 - 13	Sportsman 500 4x4 HO	550.1049		550.1046			521.5000
500	2000 - 02	Sportsman 500 4x4 RSE	550.1048		550.1054			521.5000
500	2008 - 10	Sportsman 500 EFI / HO	550.1049		550.1046			521.5000
500	2006 - 07	Sportsman 500 X2	550.0050		550.1047			521.5000
500	2008 - 09	Sportsman 500 X2	550.0050		550.1056			521.5000
500	2011 - 13	Sportsman Forest 500	550.1049		550.1046			521.5000
500	2008	Sportsman Touring 500 EFI	550.1049		550.1046			521.5000
500	2009 - 13	Sportsman Touring 500 EFI	550.0050		550.1046			521.5000
500	1999 - 00	Worker 500 4x4	550.1048		550.1054			
500	1997	Xplorer 500	550.1048		550.1054			
550	2010	Sportsman 550 EPS / X2	550.0050	550.0050	550.1084		521.5000	521.5000
550	2011	Sportsman 550 / EPS / X2	550.1051	550.1051	550.1083		521.5000	521.5000
550	2012 - 13	Sportsman 550 / EPS / X2	550.1051	550.1051	550.1082		521.5000	521.5000

SUSPENSION KITS



Polaris Cont.

Eng	Year	Model No	Lower A-Arm Kit	Upper A-Arm Kit	Rear Independent Suspension Kit	Swing Arm Bearing Kit	Front shock bushing kit	Rear shock bushing kit
550	2009	XP 550 Built	550.1051	550.1051			521.5000	521.5000
570	2014	Sportsman 570	550.1049		550.1046			
600	2003 - 05	Sportsman 600 4x4	550.1049		550.1046			521.5000
700	2002 - 07	Sportsman 700 4x4	550.1049		550.1046			521.5000
700	2005	Sportsman MV7	550.1049		550.1046			521.5000
700	2008	Sportsman X2 700 Twin EFI	550.0050		550.1056			521.5000
800	2005 - 13	Sportsman 800 EFI	550.1049		550.1046			521.5000
800	2008	Sportsman Touring 800 EFI	550.1049		550.1056			521.5000
800	2009	Sportsman Touring 800 EFI	550.0050		550.1056			521.5000
800	2007	Sportsman X2 800 EFI	550.0050		550.1047			521.5000
800	2008 - 09	Sportsman X2 800 EFI	550.0050		550.1056			521.5000
850	2012 - 13	Sportsman Forest 850 / EPS / Touring	550.1051	550.1051	550.1082		521.5000	521.5000
850	2010	Sportsman Touring EPS 850	550.0050	550.0050	550.1083		521.5000	521.5000
850	2011	Sportsman X2 850	550.1051	550.1051	550.1083		521.5000	521.5000
850	2009	Sportsman XP 850	550.1051	550.1051	550.1085		521.5000	521.5000
850	2010	Sportsman XP 850, Sportsman XP 850 EPS	550.0050	550.0050	550.1084		521.5000	521.5000
850	2011	Sportsman XP 850	550.1051	550.1051	550.1083		521.5000	521.5000
850	2012 - 14	Sportsman XP 850 EPS	550.1051	550.1051	550.1082		521.5000	521.5000
0	2011 - 12	LSV ELECTRIC 4X4	550.1074*		550.1072			
0	2010 - 13	RANGER EV 4X4	550.1074*		550.1072			
400	2010 - 14	Ranger 4x4 400	550.1074*		550.1072		521.5000	521.5000
500	2008 - 09	Ranger 2x4 500	550.1074*		550.1072			
500	2004 - 08	Ranger 4x4 500	550.1074*		550.1072			
500	2009 - 10	Ranger 4x4 500	550.1074*	550.1074*	550.1072		521.5000	521.5000
500	2011 - 13	Ranger 4x4 500 Et CREW	550.1074*		550.1072		521.5000	521.5000
500	2004	Ranger 6X6 500	550.1074*		550.1072			
500	2000 - 02	Sportsman 500 6x6	550.1048					
500	2003 - 08	Sportsman 500 6x6	550.1049					
570	2012 - 13	Ranger RZR 570	550.1049	550.1049	550.1081			
570	2014	Ranger RZR 570	550.1049	550.1049				
700	2005 - 08	Ranger 4x4 700	550.1074*		550.1072			
700	2009	Ranger 4x4 700	550.1074*	550.1074*	550.1072		521.5000	521.5000
700	2007 - 09	Ranger 4x4 700 Et CREW	550.1074*		550.1072			
700	2006 - 07	Ranger 6x6 700 EFI	550.1074*					
700	2008 - 09	Ranger 6x6 700 EFI	550.1074*		550.1072			
800	2010 - 14	Ranger 4x4 800 EFI Et CREW	550.1074*	550.1074*	550.1072		521.5000	521.5000
800	2010 - 14	RANGER 6X6 800	550.1074*	550.1074*	550.1072		521.5000	521.5000
800	2009 - 13	RANGER RZR S 800 / 4/ EPS RGE	550.1049	550.1049	550.1077			
800	2012	RANGER XP 800	550.1074*	550.1074	550.1072		521.5000	521.5000
800	2008 - 13	RZR 800	550.1049	550.1049	550.1077			
800	2009 - 12	Sportsman 800 EFI 6x6	550.1049					521.5000
850	2012 - 13	Sportsman Touring EPS 850	550.1051	550.1051	550.1082			
900	2011 - 14	Ranger 4x4 900 D	550.1074*	550.1074*	550.1072		521.5000	521.5000

*550.1074 Polaris Ranger Upgraded Kit available - Use 550.1074-1

SUSPENSION KITS



Polaris Cont.

Eng	Year	Model No	Lower A-Arm Kit	Upper A-Arm Kit	Rear Independent Suspension Kit	Swing Arm Bearing Kit	Front shock bushing kit	Rear shock bushing kit
900	2012 - 13	Ranger 4x4 CREW DIESEL 900 D	550.1074*	550.1074*	550.1072		521.5000	521.5000
900	2011 - 13	Ranger RZR XP 900	550.1076	550.1049				

*550.1074 Polaris Ranger Upgraded Kit available - Use 550.1074-1

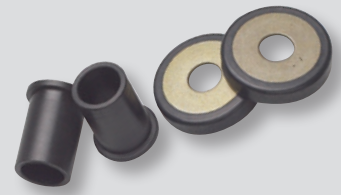
Suzuki

Eng	Year	Model No	Lower A-Arm Kit	Upper A-Arm Kit	Rear Independent Suspension Kit	Swing Arm Bearing Kit	Front shock bushing kit	Rear shock bushing kit
250	1987 - 98	LT-4WD 250	550.1039	550.1039				
250	1988 - 01	LT-F250	550.1039	550.1039				
250	2002 - 12	LT-F250 Ozark	550.1039	550.1039				
250	1999 - 02	LT-F250F (Except Ozark)		550.1039				
250	1997 - 98	LT-F4WD 250	550.1039	550.1039				
250	2004 - 09	LT-Z250	550.1039	550.1039		528.1133		
300	1991 - 02	LT-F4WDX King Quad 300	550.1039	550.1039				
400	2008 - 13	LT-A / LT-F400 2x4 / 4x4 King Quad	550.1039	550.1039				
400	2002 - 07	LT-A / LT-F400 Eiger 2wd / 4wd	550.1039	550.1039				
450	2007	LTA-450 X King Quad	550.1039	550.1037	550.1041			
450	2008 - 10	LTA-450 X King Quad	550.1039	550.1037	550.1045			
500	2000 - 01	LT-A500F Quad Master Auto	550.1039	550.1039				
500	2002 - 07	LT-A500F Vinson	550.1039	550.1039		528.1155		
500	2009 - 13	LT-A500X / XP	550.1039	550.1078	550.1075			
500	2000 - 01	LT-F500F Quad Master	550.1039	550.1039				
500	1998 - 99	LT-F500F Quad Runner	550.1039	550.1039				
500	2002	LT-F500F Vinson	550.1039	550.1039				
500	2003 - 07	LT-F500F Vinson	550.1039	550.1039		528.1155		
700	2005 - 07	LTA-700 X King Quad	550.1039	550.1037	550.1041			
700	2004 - 06	LTV-700F Twin Peaks	550.1031			528.1059		
750	2008 - 13	LTA-750 X / XP King Quad	550.1039	550.1078	550.1075			

Yamaha

Eng	Year	Model No	Lower A-Arm Kit	Upper A-Arm Kit	Rear Independent Suspension Kit	Swing Arm Bearing Kit	Front shock bushing kit	Rear shock bushing kit
125	1991 - 03	YFA1	550.1009			528.1130		
125	2004	YFA1	550.1009			528.1130		
125	2004	YFM125 Grizzly	550.1009			528.1130		

SUSPENSION KITS



Yamaha Cont.

Eng	Year	Model No	Lower A-Arm Kit	Upper A-Arm Kit	Rear Independent Suspension Kit	Swing Arm Bearing Kit	Front shock bushing kit	Rear shock bushing kit
125	2005 - 13	YFM125 Grizzly	550.1009			528.1130		
125	2011 - 13	YFM125 Raptor	550.1009	550.1005		528.1187		
200	1986 - 89	YFM200 Moto-4	550.1011			528.1058		
225	1986 - 88	YFM225 Moto-4	550.1001			528.1058		
225	1983 - 86	YFM225 Tri-Moto				528.1058		
250	1992 - 98	YFB250 Timberwolf	550.1036			528.1058		
250	1994 - 00	YFB250FW Timberwolf	550.1036			528.1058		
250	1999 - 04	YFM250 Beartracker	550.1036			528.1084		
250	2007 - 09	YFM250 Big Bear	550.1036			528.1084		
250	1989 - 91	YFM250 Moto-4	550.1001			528.1058		
250	2005 - 06	YFM250B Bruin	550.1036			528.1084		
250	2008 - 13	YFM250 RAPTOR	550.1009	550.1005		528.1187		
350	2007 - 11	YFM350 Grizzly IRS	550.1036	550.1036	550.1034*			
350	2013	YFM350 Grizzly	550.1036	550.1036				
350	2004 - 06	YFM350A Bruin 2WD	550.1036	550.1036				
350	1987 - 95	YFM350ER Moto-4		550.1001		528.1058		
350	2004 - 06	YFM350FA Bruin 4WD	550.1036	550.1036				
350	2007 - 14	YFM350FGW Grizzly 4WD	550.1036	550.1036				
350	1987 - 99	YFM350FW Big Bear	550.1036	550.1036		528.1058		
350	2007 - 11	YFM350GW Grizzly 2WD	550.1036	550.1036				
350	1996 - 99	YFM350U Big Bear	550.1036	550.1036		528.1058		
350	1995 - 05	YFM35FX Wolverine	550.1036	550.1036		528.1058		
350	2006 - 09	YFM35X Wolverine	550.1036	550.1036				
350	2009 - 13	YFM350 RAPTOR	550.1009	550.1009		528.1124		
400	2000 - 06	YFM400 Big Bear 2WD/4WD	550.1036	550.1036		528.1084		
400	2007 - 12	YFM400 Big Bear IRS	550.1036	550.1036	550.1034*			
400	2007 - 08	YFM400 Grizzly IRS	550.1036	550.1036	550.1034*			
400	2000 - 04	YFM400 Kodiak 2WD	550.1036	550.1036				
400	1999	YFM400 Kodiak 4WD	550.1036	550.1036		528.1058		
400	2000 - 06	YFM400 Kodiak 4WD	550.1036	550.1036				
450	2007 - 14	YFM450 Grizzly IRS	550.1036	550.1036	550.1034*			
450	2003 - 04	YFM450 Kodiak	550.1036	550.1036				
450	2005 - 06	YFM450 Kodiak	550.1036	550.1036	550.1034*			
450	2006 - 10	YFM45FX Wolverine 450 4X4	550.1036	550.1036				
450	2009 - 14	YFZ450R/X	550.1009	550.1058				
550	2009 - 14	YFM550 Grizzly / EPS	550.1036	550.1036	550.1034*			
600	1998 - 01	YFM600 Grizzly	550.1036			528.1058		
660	2002 - 08	YFM660 Grizzly	550.1036	550.1036	550.1034*			
700	2007 - 14	YFM700 Grizzly	550.1036	550.1036	550.1034*			
700	2008 - 14	YFM700 Grizzly EPS	550.1036	550.1036	550.1034*			
450	2006 - 09	450RHINO	550.1036	550.1036	550.1034*			
660	2004 - 07	660 RHINO	550.1036	550.1036	550.1034*			
700	2008 - 13	700 RHINO FI	550.1036	550.1036	550.1034*			

*550.1034 - Knuckle only kit available - 550.1034-1