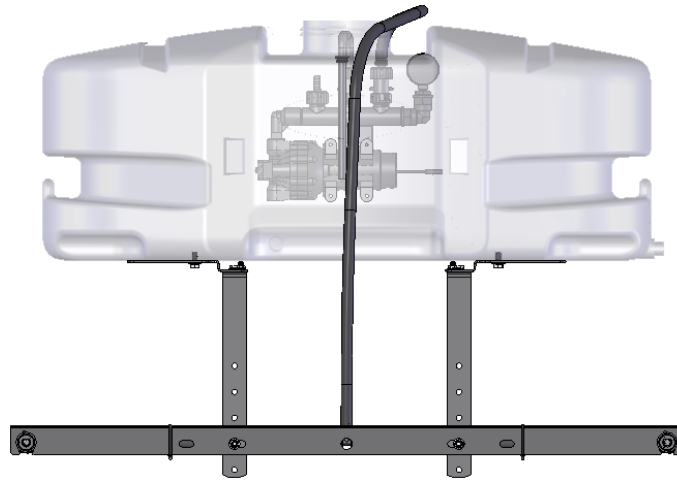


# OWNER'S MANUAL

## Model: ATVBK-200 (5301230)

(2-Nozzle Boom Assembly w/Connecting Fittings)



### Technical Specifications

- 2-Nozzle Boom Assembly
- 80" Spray Coverage
- Corrosion-Resistant Nozzles
- Nozzle design incorporates a pre-orifice to produce larger droplets for less drift.
- Large round orifice reduces clogging.
- Excellent distribution for uniform coverage along the boom.

### Assembly

Remove the parts to the boom assembly from the carton. Refer to the parts list and exploded view drawing to help identify all the components.

1. Attach the tank to the brackets loosely as shown in the exploded view.
2. Place the sprayer onto the carrier rack of the ATV. Use the u-bolts and hardware to secure the tank mount to the rack.
3. Connect the boom mounting brackets to the tank mounting brackets with hardware provided as shown. Note these brackets will be located about 16 1/4" apart on most ATV's. Now tighten all bolts and nuts.
4. Center the boom onto your boom mounts, and secure in place with the hardware provided. The boom should be about 17"-19" above the ground.
5. Route your boom feeder hose to the back end of the sprayer. Join the hose to the tee barb. Then clamp in place with a hose clamp.
6. An additional set of plumbing fittings may be included with your boom kit. These may or may not be used. Detail A shows the configuration of these fittings as they will attach to your sprayer when hooking up to a 1.0 gpm pump. If your sprayer has the manifold assembly off the outlet side of your pump, you probably will not need to utilize these fittings.

For the 'old style' tank, where the pump mounts on top, an 11/16" diameter hole (approx.) must be drilled through the top of the tank for the bypass return hose. After threading the fittings together, locate the place on your tank for the hole so that the hose can be inserted without causing kinks.

**CAUTION: Never use a metal object or other sharp item for cleaning a nozzle tip. It is better to use a nozzle brush (NOT wire brush) or compressed air for tip cleaning.**



[www.fimcoindustries.com](http://www.fimcoindustries.com)

1000 FIMCO Lane, P.O. Box 1700, North Sioux City, SD 57049  
Toll Free Phone: 800-831-0027 : Toll Free Fax: 800-494-0440

Form No. 729 [5004565 (08/13)] Printed in the U.S.A.

BEFORE RETURNING THIS PRODUCT  
FOR ANY REASON, PLEASE CALL

**1-800-831-0027**

IF YOU SHOULD HAVE A QUESTION OR  
EXPERIENCE A PROBLEM WITH YOUR  
FIMCO INDUSTRIES PRODUCT:

**1-800-831-0027**

BEFORE YOU CALL, PLEASE HAVE THE  
FOLLOWING INFORMATION AVAILABLE:  
SALES RECEIPT & MODEL NUMBER. IN MOST  
CASES, A FIMCO INDUSTRIES EMPLOYEE CAN  
RESOLVE THE PROBLEM OVER THE PHONE.

### General Information

Thank you for purchasing this product. The purpose of this manual is to assist you in operating and maintaining your boom kit. Please read it carefully, as it furnishes information which will help you achieve years of trouble-free operation.

### Warranty/Parts/Service

For home usage, products are warranted for one year from date of purchase against manufacturer or workmanship defects.

Commercial users have a 90 day warranty.

Your authorized dealer is the best source of replacement parts and service. To obtain prompt, efficient service, always remember to give the following information...

- Correct Part Description and/or part number.
- Model number/Serial number of your sprayer.

Part descriptions and part numbers can be obtained from the illustrated parts list section(s) of this manual.

Whenever you need parts or repair service, contact your distributor/dealer first. For warranty work, always take your original sales slip, or other evidence of purchase date, to your distributor/dealer.

## Testing the Sprayer

### NOTE:

It is **VERY** important for you to test your sprayer with plain water before actual spraying is attempted. This will enable you to check the sprayer for leaks, without the possibility of losing any expensive chemicals.

Add water to the tank & drive to the starting place for spraying. When you are ready to spray, turn the boom valve to the "on" position. This will start solution spraying from the tips of the boom. The pressure will decrease slightly when the boom is spraying. Adjust the pressure by turning the "ON/OFF" valve lever on the bypass line valve.

Read the operating instructions and initially begin spraying by closing the 'bypass' valve (this is the center ON/OFF valve located at the center port of your manifold assembly) and opening the boom line valve (this is the 'other' valve on the manifold). This will enable the air in the line to be eliminated (purged) through all the tips, while building pressure. When everything tests all right (no leaks, & good pressure), add the desired chemicals to the mixture and water combination and start your spraying operation. Adjust the pressure and spray as you did in the testing procedure.

Conditions of weather and terrain must be considered when setting the sprayer. Do not spray on windy days. Protective clothing must be worn in some cases.

**Be sure to read the chemical label(s) correctly!**

## After Spraying

After use, fill the sprayer tank part way with water. Start the sprayer, and allow the clear water to be pumped through the plumbing system and out through the spray nozzles. Refill the tank about half full with plain water and use FIMCO Tank Neutralizer and Cleaner, and repeat cleaning instructions above. Flush the entire sprayer with the neutralizing/cleaning agent, then flush out one more time with plain water. Follow the chemical manufacturer's disposal instructions of all wash or rinsing water. For the boom, (if applicable) remove the tips and screens from the nozzle assemblies. Wash these items out thoroughly. Blow the orifice clean and dry. If the orifice remains clogged, clean it with a fine bristle (NOT WIRE) brush, or with a toothpick. Do not damage the orifice. Water rinse and dry the tips before storing.

**WARNING: Some chemicals will damage the pump valves if allowed to soak untreated for a length of time! ALWAYS flush the pump as instructed after each use.**

## Calibration

Chemical labels may show application rates in gallons per acre, gallons per 1000 square feet, or gallons per 100 square feet. You will note that the tip chart shows all 3 of these rating systems.

Once you know how much you are going to spray, then determine (from the tip chart) the spraying pressure (PSI), and the spraying speed (MPH).

Determining the proper speed of the pulling vehicle can be done by marking off 100, 200, & 300 feet. The speed chart indicates the number of seconds it takes to travel the distances. Set the throttle and with a running start, travel the distances. Adjust the throttle until you travel the distances in the number of seconds indicated by the speed chart. Once you have reached the throttle setting needed, mark the throttle location so you can stop and go again, returning to the same speed.

Add water and proper amount of chemical to the tank and drive to the starting place for spraying.

Speed Chart			
	Time Required in seconds to travel a distance of:		
Speed in M.P.H. (Miles per Hour)	100 Ft.	200 Ft.	300 Ft.
1.0	68 sec.	136 sec.	205 sec.
2.0	34	68	102
3.0	23	45	68
4.0	17	34	51
5.0	14	27	41
6.0	11	23	34
7.0	9.7	19	29
8.0	8.5	17	26
9.0	7.6	15	23
10.0	6.8	14	20

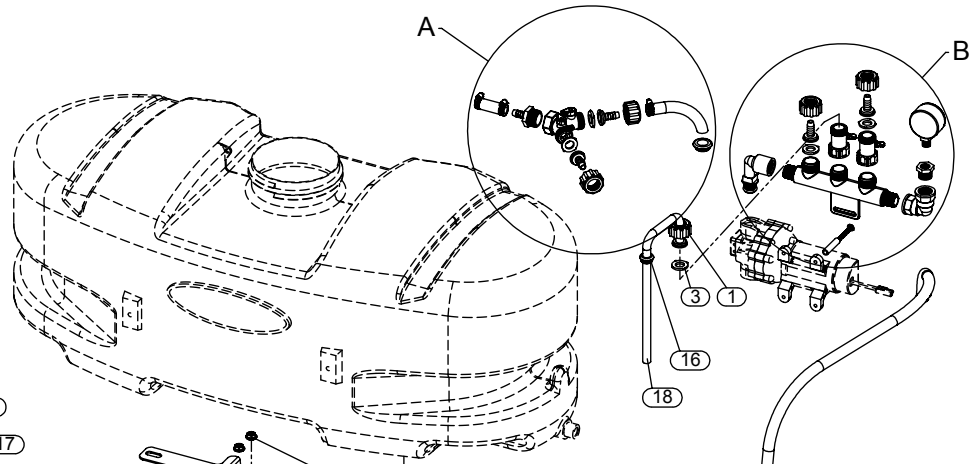
Tip Color	TIP NO. (31 WIRE) SCREEN SIZE	Liquid Pressure in PSI	Capacity 1 Nozzle in GPM	Capacity 1 Nozzle in c/min	GALLONS PER ACRE 30" SPACING				GALLONS PER ACRE 40" SPACING			
					5	6	7	8	5	6	7	8
					M.P.H.	M.P.H.	M.P.H.	M.P.H.	M.P.H.	M.P.H.	M.P.H.	M.P.H.
RED	TF-VS2 (50 Mesh)	10	.20	26	7.9	8.6	5.7	5.0	5.9	5.0	4.2	3.7
		20	.28	36	11.1	9.2	7.9	6.9	8.3	6.9	5.9	5.2
		30	.35	45	13.9	11.6	9.9	8.7	10.4	8.7	7.4	6.5
		40	.40	51	15.8	13.2	11.3	9.9	11.9	9.9	8.5	7.4
BROWN	TF-VS2.5 (50 Mesh)	10	.25	32	9.9	8.3	7.1	6.2	7.4	6.2	5.3	4.6
		20	.35	45	13.9	11.6	9.9	8.7	10.4	8.7	7.4	6.5
		30	.43	55	17.0	14.2	12.2	10.6	12.8	10.6	9.1	8.0
		40	.50	64	19.8	16.5	14.1	12.4	14.9	12.4	10.6	9.3
GRAY	TF-VS3 (50 Mesh)	10	.30	38	11.9	9.9	8.5	7.4	8.9	7.4	6.4	5.6
		20	.42	54	16.6	13.9	11.9	10.4	12.6	10.4	8.9	7.8
		30	.52	67	21	17.2	14.7	12.9	15.4	12.9	11.0	9.7
		40	.60	77	24	19.8	17.0	14.9	17.8	14.9	12.7	11.1
WHITE	TF-VS4	10	.40	51	15.8	13.2	11.3	9.9	11.9	9.9	8.5	7.4
		20	.57	73	23	18.8	15.1	14.1	16.9	14.1	12.1	10.6
		30	.69	88	27	23	19.5	17.1	20	17.1	14.6	12.8
		40	.80	102	32	26	23	19.8	21	18.8	17.0	14.9
L. BLUE	TF-VS5	10	.50	64	19.8	16.5	14.1	12.4	14.9	12.4	10.6	9.3
		20	.71	91	28	23	20	17.6	21	17.5	15.1	13.2
		30	.87	111	34	29	25	22	26	22	18.5	16.1
		40	1.00	128	40	33	28	25	30	25	21	18.6
L.GREEN	TF-VS7.5	10	.75	96	30	25	21	18.6	22	19	15.9	13.9
		20	1.08	136	42	35	30	26	31	28	22	19.7
		30	1.30	166	51	43	37	32	38	32	28	24
		40	1.50	192	59	50	42	37	45	37	32	28
BLACK	TF-VS10	10	1.00	128	40	33	28	25	30	25	21	18.6
		20	1.41	180	56	47	40	35	42	35	30	26
		30	1.73	221	68	57	49	43	51	43	37	32
		40	2.00	256	79	68	57	50	59	50	42	37

## Winter Storage

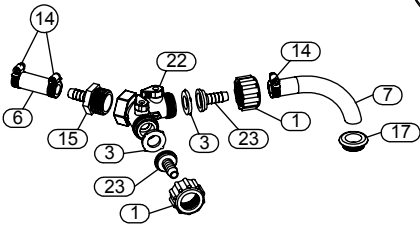
Drain all water out of your sprayer, paying special attention to the pump, handgun, and valve(s). These items are especially prone to damage from chemicals and freezing weather.

The sprayer should be winterized before storage by pumping a solution of RV antifreeze through the entire plumbing system. This antifreeze solution should remain in the plumbing system during the winter months. When spring time comes and you are preparing your sprayer for the spray season, rinse the entire plumbing system out, clearing the lines of the antifreeze solution. Proper care and maintenance will prolong the life of your sprayer.

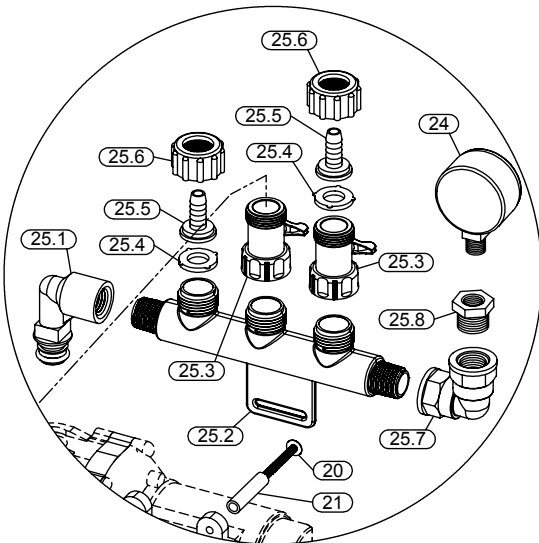
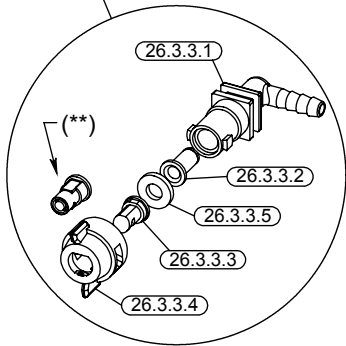
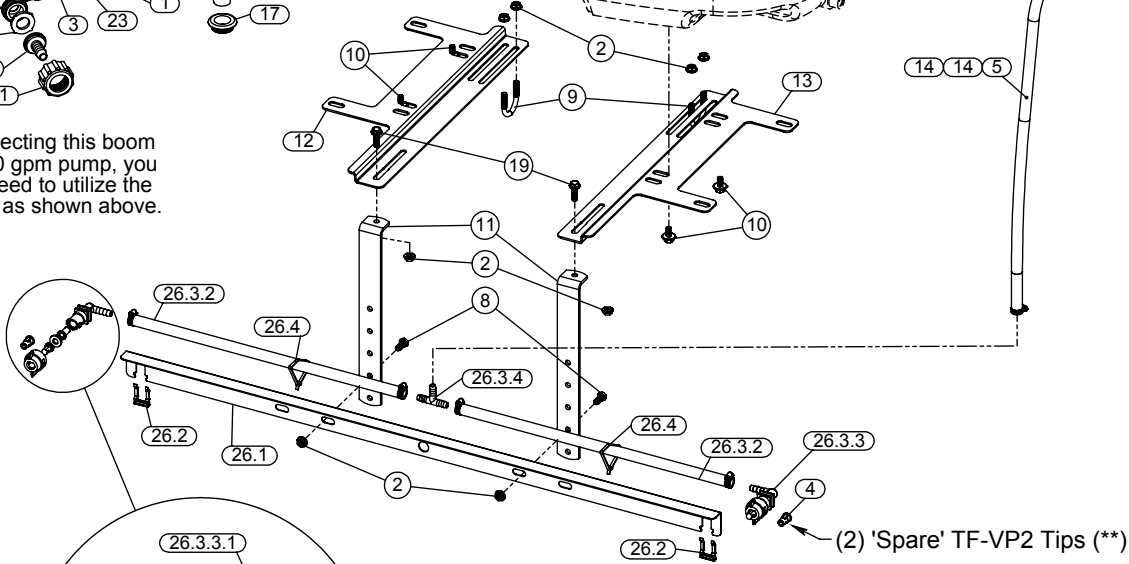
Exploded View/  
Parts List:  
ATVBK-200 (5301230)



Detail A



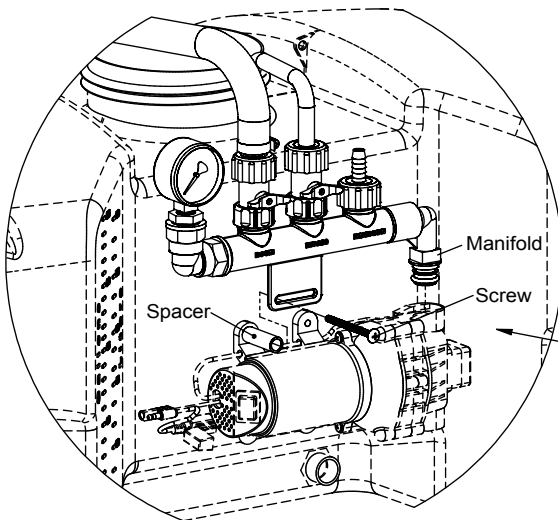
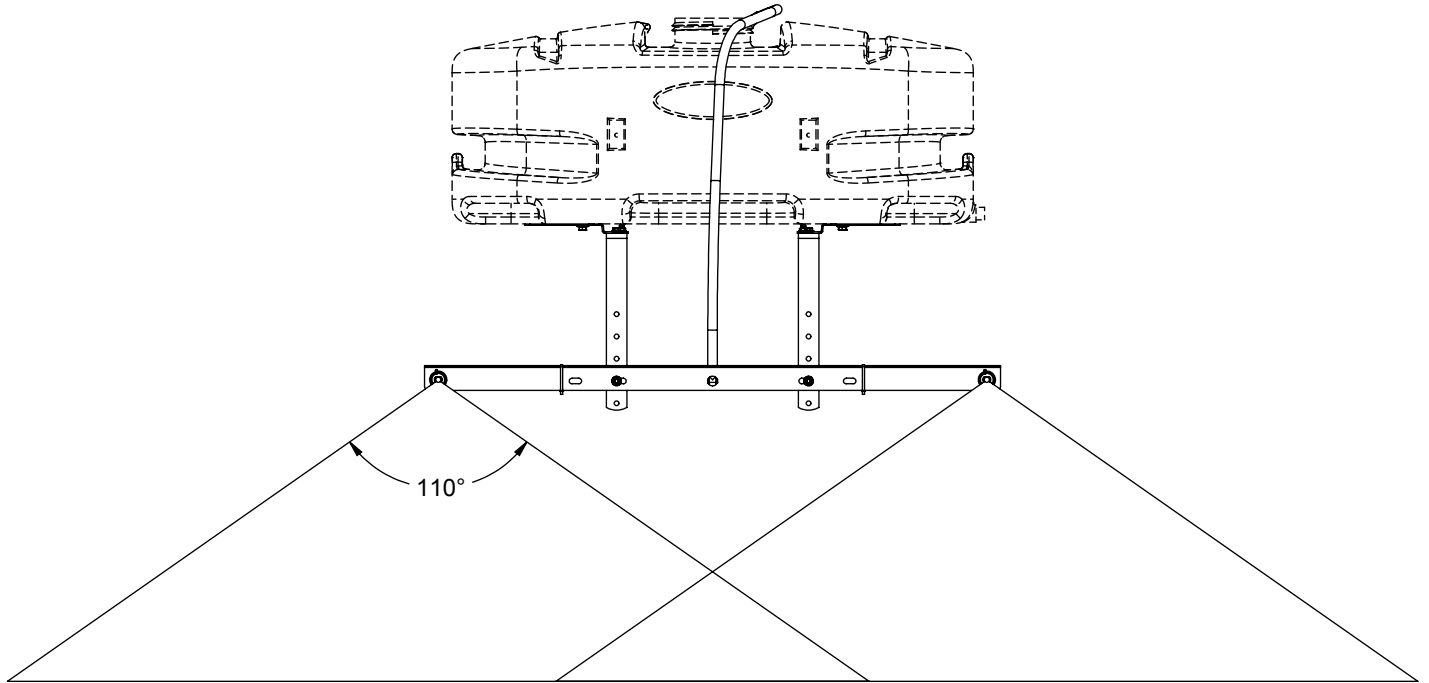
If connecting this boom to a 1.0 gpm pump, you may need to utilize the fittings, as shown above.



Detail B

Item No	Part Number	Qty	Description
1	5006209	3	Poly Knurled Swivel Nut, 3/4" FGHT
2	5006307	8	5/16"-18 Hex Whiz (Flange) Locknut
3	5016066	3	Garden Hose Washer
4	5018272	2	Turbo FloodJet Tip (TF-VP2)
5	5020161	1	Hose, 3/8"-1 Brd. x 48"
6	5020343	1	Hose, 3/8"-1 Brd. x 2"
7	5020490	1	Hose, 3/8"-1 Brd. x 7 1/4"
8	5034038	2	H.H.C.S. 5/16"-18nc x 3/4" Long
9	5034220	2	Round U-Bolt, 5/16"-18 x 1 5/16" x 1 3/4"
10	5034531	4	5/16"-18 x 5/8" Flange Lock Screw
11	5038506	2	Boom Mounting Bracket
12	5038667	1	Tank Mounting Plate (L.H.) (ATV)
13	5038725	1	Tank Mounting Plate (R.H.) (ATV)
14	5051144	5	Hose Clamp (3/8")
15	5067120	1	Poly Fitting, 3/4" MGHT x 3/8" HB
16	5075018	1	Grommet
17	5075022	1	Grommet (5/8" I.D.)
18	5100359	1	Poly Bypass "J" Hose (3.8/2.1 - 25 Gal.)
19	5117300	2	5/16"-18 x 1" Flange Whiz Lock Screw
20	5117313	1	#10-24 x 2 1/2" Truss Head Machine Screw
21	5127191	1	Manifold Spacer (2.1gpm)
22	5143204	1	Dual Hose Shut-Off "Y" Valve
23	5149034	2	Poly Swivel, 3/8" Hose Barb
24	5167007	1	Pressure Gauge, 0-100 p.s.i.
25	5277685	1	Manifold Assembly (Trailer/ATV)
25.1	5010430	1	Port Kit Elbow, 1/2" FNPT
25.2	5143405	1	Manifold w/Mounting Tab
25.3	5143188	2	Nylon Shut-Off Valve (3/4" GHT)
25.4	5016066	2	Garden Hose Washer
25.5	5149034	2	Poly Swivel, 3/8" Hose Barb
25.6	5006209	2	Poly Knurled Swivel Nut, 3/4" FGHT
25.7	5010236	1	Poly Elbow, 1/2" FNPT x 1/2" FNPT
25.8	5041073	1	Poly Reducing Bushing, 1/2" MNPT x 1/4" FNPT
26	5277774	1	2-Nozzle Boom (QJ)
26.1	5022431	1	Boom Mount Angle -2 Nozzle (QJ100)
26.2	5053110	2	Plastic Retaining Clip 14 Ga. & 16 Ga.
26.3	5277692	1	2-Nozzle Harness (3/8")
26.3.1	5051144	4	Hose Clamp (3/8")
26.3.2	5020510	2	Hose, 3/8"-1 Brd. x 19-3/8"
26.3.3	5277688	2	ELL Nozzle Sub-Assembly (3/8")
26.3.3.1	5056113	1	Single Hose Shank (3/8" Hose)
26.3.3.2	5116019	1	Nozzle Strainer, Red (50 Mesh)
26.3.3.3	5018274	1	Turbo FloodJet Tip (TF-VP3)
26.3.3.4	5046251	1	QJ Cap Only (Black)
26.3.3.5	5016157	1	Seat Washer (QJ Caps)
26.3.4	5086025	1	Poly Hose Tee, 3/8" HB
26.4	5133094	2	Nylon Cable Tie

## Typical Spray Pattern



## Manifold Spacer Attachment

### NOTE:

To install the manifold spacer, remove one screw holding the pump to the tank (upper left location as you're looking at the pump) and place the spacer between the manifold and the pump's foot. Replace original screw with the long machine screw, feeding it through the slot in the manifold and through the spacer, thus securing the manifold. This screw will be 2-1/2" long for the 2.1gpm pump, and 3" long for the 3.8gpm pump.

This does not apply to units that use a 1.0 gpm pump.