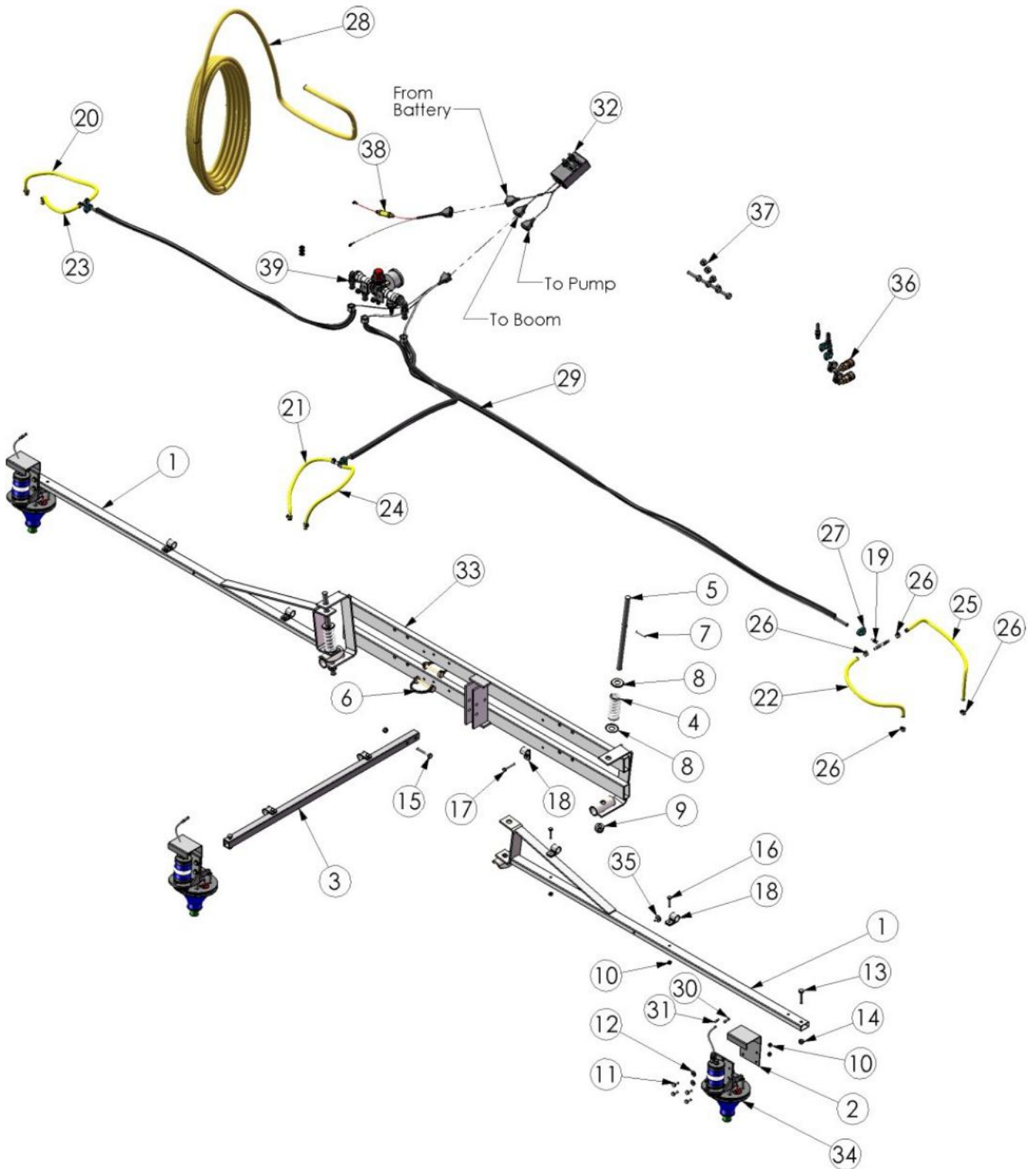


# Parts Diagram

Boom CDA 5.4M



## Parts List

Item No.	Description	Part No.	QTY	Unit
1	Arm-Boom-ATV4-ZP	1072-1700	2	EA
2	Bracket-Mount-Head-318 G2-ZP	1300-5400	3	EA
3	Arm-Boom-318 G2-Centre-ZP	1072-1300	1	EA
4	Spring-Compression-Boom-SL-ZP	8250-1710	2	EA
5	Pin-Hinge-16x280mm-ZP	6100-4000	2	EA
6	Pin-Locking-8x57mm-ZP	6100-4860	2	EA
7	Fastener-Pin-Roll-3/16"x1 1/4"-Black Steel	3205-0400	2	EA
8	Fastener-Washer-Cup-M16-Pressed-ZP	3310-0016	4	EA
9	Fastener-Nut-Nyloc-M16-ZP	3170-0016	2	EA
10	Fastener-Nut-Nyloc-M6-ZP	3170-0006	20	EA

11	Fastener-Set Screw-Hex-8.8 Grade-M6x16-ZP	3290-0616	12	EA
12	Fastener-Washer-Flat-M6-ZP	3310-6006	12	EA
13	Fastener-Bolt-Hex-8.8 Grade-M8x40-ZP	2840-0840	3	EA
14	Fastener-Nut-Nyloc-M8-ZP	3170-0008	4	EA
15	Fastener-Set Screw-Hex-8.8 Grade-M8x50-ZP	3290-0850	1	EA
16	Fastener-Set Screw-Hex-8.8 Grade-M6x30-ZP	3290-0630	4	EA
17	Fastener-Set Screw-Hex-8.8 Grade-M6x40-ZP	3290-0640	3	EA
18	Clip-P Type-Bracket-19mm-Steel ZPG	2050-5600	7	EA
19	Pipe-Fitting-Tee-6 Shankx6 Shankx6 Shank-Plastic	6200-9130	3	EA
20	Hose-Spray-Delivery-7 Bar-6mm ID-PVC	4100-1006	1	M
21	Hose-Spray-Delivery-7 Bar-6mm ID-PVC	4100-1006	1	M
22	Hose-Spray-Delivery-7 Bar-6mm ID-PVC	4100-1006	1	M
23	Hose-Spray-Delivery-7 Bar-6mm ID-PVC	4100-1006	1	M
24	Hose-Spray-Delivery-7 Bar-6mm ID-PVC	4100-1006	1	M
25	Hose-Spray-Delivery-7 Bar-6mm ID-PVC	4100-1006	1	M
26	Clamp-Hose-Oetiker-Single Ear Stepless-13.2<>15.7mm-S/S	2000-2013	12	EA
27	Clamp-Hose-Herbi-C-Ratchet-10.2<>11.8mm-Black-Nylon	2000-0010	3	EA
28	Hose-Spray-Delivery-40 Bar-10mm ID-Yellow	4100-0010	1	EA
29	Cable-Electrical-Loom-CDA 318-Boom	1500-4000	1	EA
30	Terminal-Bullet-Female-Crimp-Insulated-Red	8790-1210	3	EA
31	Terminal-Bullet-Male-Crimp-Insulated-Red	8790-1240	3	EA
32	Cable-Electrical-Loom-2 Switch Box-2.5M	1500-3100	1	EA
33	Centre-Boom-CDA-318G2-ZP	1900-1410	1	EA
34	Atomiser-Micron-CDA-MM84-Bare	1085-5100	3	EA
35	Buffer-Rubber-SL Boom	1400-1600	1	EA
36	<a href="#">Kit-Dry Break-CDA-8.5x10-Quick Coupler-Brass</a>	4500-2250	1	EA
37	Kit-Quicksmart Attachment Parts-Bagged	4500-9000	1	EA
38	Cable-Electrical-Loom-Battery Feed-0.5M	1500-3600	1	EA
39	<a href="#">Sub-Controller-Regulator-CU2 318G2</a>	8427-2110	1	EA