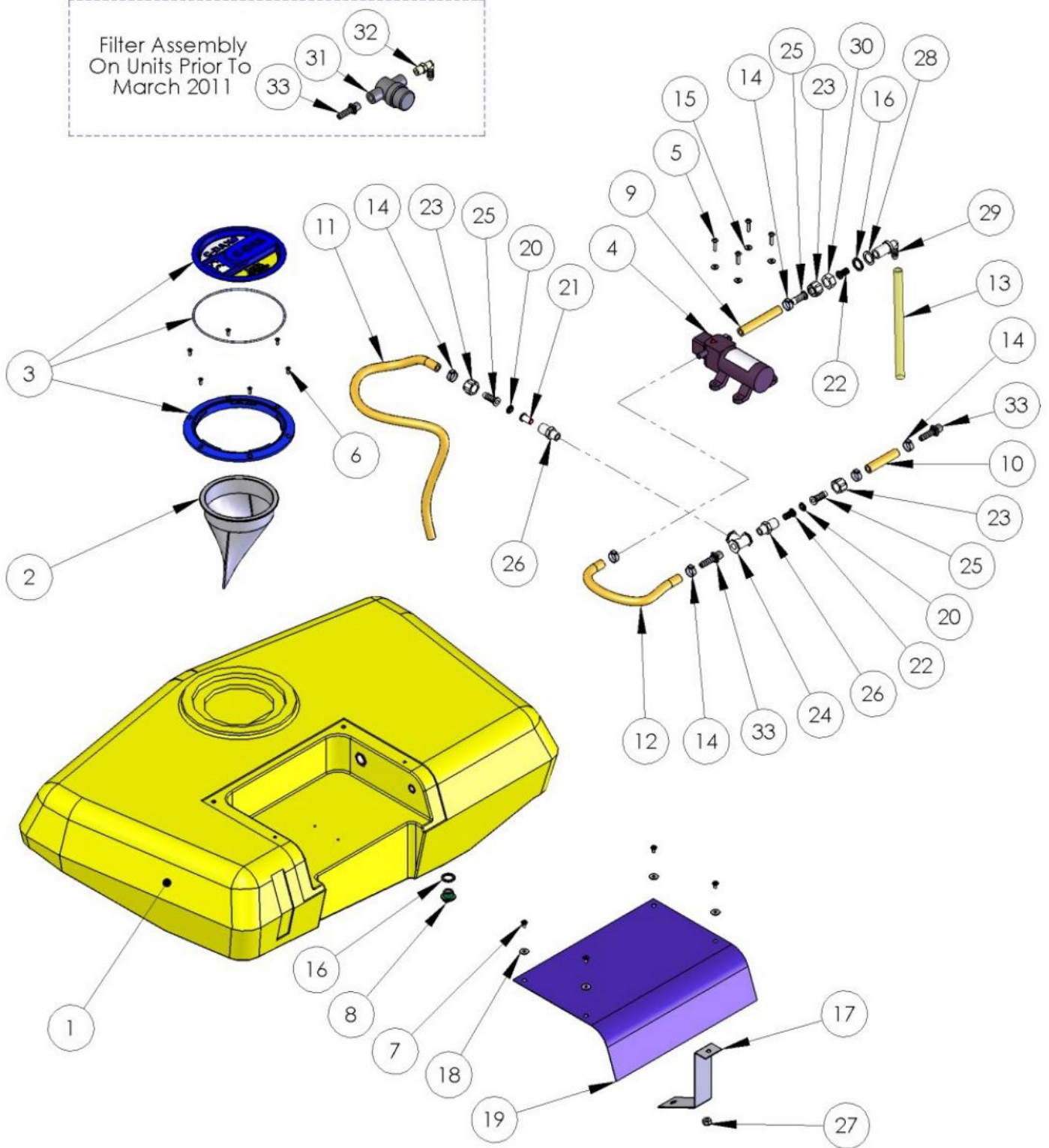


Parts Diagram

Eliminator Tank
Model: Eliminator Tank (81883)

Filter Assembly
On Units Prior To
March 2011



Parts List

Item No.	Description	Part No.	QTY	Unit
1	Rota-Tank-Eliminator-Yellow-MDPE	7500-5000	1	EA
2	Filter-Basket-D150-Nylon Rim/Fabric Mesh	3400-1110	1	EA
3	Sub-Lid & Ring Assembly-D150-C-Dax Vented-Blue-Nylon	8427-6005	1	EA
4	Pump-Flojet-LF12-12 Volt-3.8LPM-10mm Hose Shanks	6800-4000	1	EA
5	Fastener-Machine-Screw-Pan-M5x20-Pozi-ZP	3110-0520	4	EA
6	Fastener-Self Tap-Screw-CSK-8Gx1/2"-Pozi-Stainless	3270-8012	6	EA
7	Fastener-Machine-Screw-Pan-M5x8-Slot-ZP	3110-0508	4	EA
8	Pipe-Fitting-Plug-Thumb Screw-3/8BSPM-Black-Plastic	6200-6260	1	EA
9	Hose-Spray-Delivery-40 Bar-8.5mm ID-Yellow	4100-0008	1	EA
10	Hose-Spray-Delivery-40 Bar-8.5mm ID-Yellow	4100-0008	1	EA

11	Hose-Spray-Delivery-40 Bar-8.5mm ID-Yellow	4100-0008	1	EA
12	Hose-Spray-Delivery-40 Bar-8.5mm ID-Yellow	4100-0008	1	EA
13	Tube-Transluscent-10MM-100PSI	8840-8410	1	EA
14	Clamp-Hose-Oetiker-Single Ear Stepless-14.5<>7.0mm-S/S	2000-2014	7	EA
15	Fastener-Washer-Flat-M5-ZP	3310-6005	4	EA
16	Gasket-Washer-17x23x2-Rubber	3700-9130	2	EA
17	Bracket-Tank-Eliminator-GL	1300-8400	1	EA
18	Fastener-Washer-Flat-3/16"x7/8"x1.5-Grade	3310-9210	4	EA
19	Cover-Tank-Eliminator-PC	2250-8300	1	EA
20	Nozzle-Plate-Teejet-Orifice-0.063in-SS	5300-5100	2	EA
21	Filter-Nozzle-Tip-Incl Check Valve-50Mesh-5PSI-SS Ball-Plastic	3400-5410	1	EA
22	Filter-Nozzle Tip-50 Mesh-Plastic	3400-5400	2	EA
23	Pipe-Fitting-Nut-Swivel-11/16UNFF-Plastic	6200-5550	3	EA
24	Pipe-Fitting-Tee-1/4BSPFx1/4BSPFx1/4BSPF-Plastic	6200-9100	1	EA
25	Pipe-Fitting-Straight-10 Shank-Swivel-Suit Fly Nut-Plastic	6200-8220	3	EA
26	Pipe-Fitting-Reducer-11/16UNCMx1/4UNFM-Straight-Plastic	6200-7380	2	EA
27	Fastener-Nut-Nyloc-M8-ZP	3170-0008	1	EA
28	Gasket-Washer-25x17.4x1.4-Nylon	3700-9150	1	EA
29	Pipe-Fitting-Thru Tank-Elbow-10 Shankx11/16UNFM-Nylon	6200-9400	1	EA
30	Pipe-Fitting-Nut-Back-11/16UNFM-Plastic	6200-5420	1	EA
31	Filter-In Line-Hypro-50 Mesh S/S-1/2NPTM-Polpropylene	3400-2980	1	EA
32	Pipe-Fitting-Elbow-10 Shankx1/4NPTM-Nylon	6200-2400	1	EA
33	Pipe-Fitting-Teejet-Straight-10 Shankx1/4NPTM-Plastic	6200-9340	3	EA