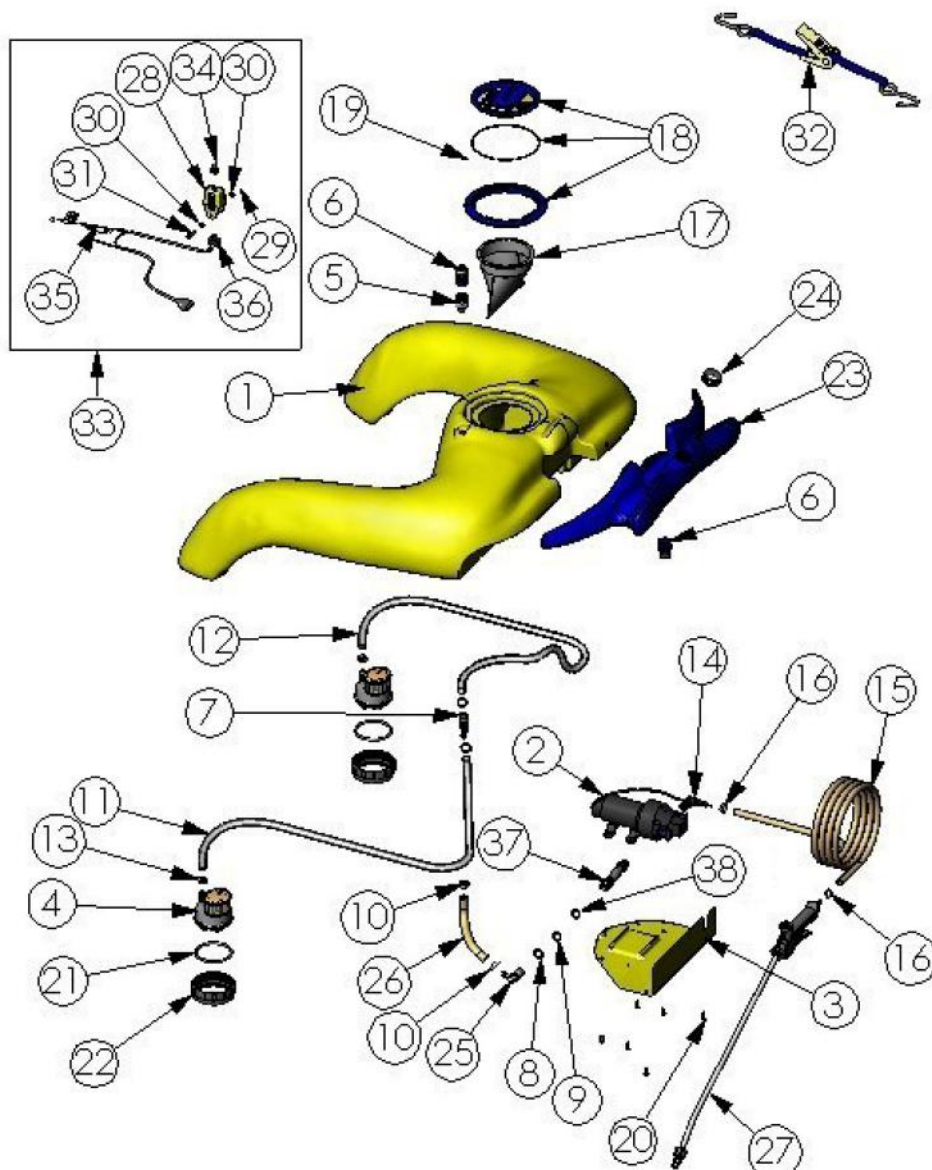


Parts Diagram

SprayRider™ 50

Model: SprayRider™ 50



Parts List

Item No.	Description	Part No.	QTY	Unit
1	Rota-Tank-50L-Sprayrider-Yellow-MDPE-Incl MIG	7500-3650	1	EA
2	Pump-Flojet-Triplex-12 Volt-7.6LPM-Quad Ports	6800-5000	1	EA
3	Rota-Cover-Pump-SR50/80-Yellow-MDPE	7500-1500	1	EA
4	Sub-Valve Assembly-Suction-Sprayrider 50/80	8427-9690	2	EA
5	Pipe-Fitting-Adaptor-1/4BSPMxM28-SR G2-Plastic	6200-1020	1	EA
6	Valve-Water Bottle-Bottle thread-Plastic	8900-8580	2	EA
7	Pipe-Fitting-TeeJet-Cross-Shank13x13x13x1/4"NPTF-Black-Nylon	6200-9300	1	EA
8	Gasket-Washer-25x17.4x1.4-Nylon	3700-9150	1	EA
9	Gasket-Washer-17x23x2-Rubber	3700-9130	1	EA
10	Clamp-Hose-Oetiker-Single Ear Stepless-19.4<>22.6mm-S/S	2000-2019	2	EA
11	Tube-Transluscent-13MM-100PSI	8840-8413	1	EA
12	Tube-Transluscent-13MM-100PSI	8840-8413	1	EA
13	Clamp-Hose-Oetiker-Single Ear Stepless-16.6<>19.8mm-S/S	2000-2017	4	EA
14	Pipe-Fitting-Flojet-Elbow-10 ShankxQuad Port Pump-Nylon	6200-2980	1	EA
15	Hose-Spray-Delivery-40 Bar-8.5mm ID-Yellow	4100-0008	1	EA

16	Clamp-Hose-Oetiker-Single Ear Stepless-14.5<>7.0mm-S/S	2000-2014	2	EA
17	Filter-Basket-D150-Nylon Rim/Fabric Mesh	3400-1110	1	EA
18	Sub-Lid & Ring Assembly-D150-C-Dax Vented-Blue-Nylon	8427-6005	1	EA
19	Fastener-Self Tap-Screw-CSK-8Gx1/2"-Pozi-Stainless	3270-8012	6	EA
20	Fastener-Machine-Screw-CSK-M5x16-Phillips-Stainless	3070-0516	6	EA
21	O'Ring-Metric-5.0x80mm-N70	5500-9110	2	EA
22	Filter-Nut-Bowl-Arag-Series 312 & 314-Nylon	3400-5500	2	EA
23	Rota-Tank-Rinse-Sprayrider-Blue-MDPE	7500-5100	1	EA
24	Cap-Tank-Freshwater-Drilled-Black	1600-7001	1	EA
25	Pipe-Fitting-Thru Tank-Elbow-13 Shankx11/16UNFM-Nylon	6200-9410	1	EA
26	Hose-Spray-Delivery-40 Bar-13mm ID-Yellow	4100-0013	1	M
27	Hand Gun-SR-Lance-600mm-Cone Nozzle-Adjustable	4000-5000	1	EA
28	Rota-Housing-Switch-Handlebar-Yellow-MDPE	7500-2300	1	EA
29	Fastener-Nut-Plain-M5-ZP	3180-0005	1	EA
30	Fastener-Washer-Flat-M5-ZP	3310-6005	2	EA
31	Fastener-Machine-Screw-Pan-M5x30-Pozi-ZP	3110-0530	1	EA
32	Strap-Tie Down-Ratchet-Blue	8410-8450	1	EA
33	Sub-Switch Assembly-Handlebar Mount-Sprayrider 50/80	8427-8270	1	EA
34	Cover-Switch-Water Proof Boot-Toggle Lever-Rubber-Black	2250-8200	1	EA
35	Fuse Link-Electrical-Standard Blow-15 Amp-1"x1/4"-Glass	3600-1010	1	EA
36	Switch-Electrical-Toggle-SPST-250V-16Amp	8450-2410	1	EA
37	Sub-Hose Assembly-Suction-Sprayrider 50/80 Quadport	8427-4150	1	EA
38	Pipe-Fitting-Nut-Back-11/16UNFM-Plastic	6200-5420	1	EA